

Today's paper

Subscriptions

Traffic & transit alerts 4

Islip, NY 75°

Register

Log in

September 1, 2011

newsday.com

updated our LI high school football record book.

search newsday.com Go

Long Island Sports Entertainment News Lifestyle Business Health Opinion Jobs Cars Real Estate More

Long Island NYC Nation / World State Politics Tech Health Business AP Puzzles Columns

Breaking Newsday > News > Breaking

Add Comment | Email | Print | A+ A- | Tweet 8 | Like Confirm

Most South Shore beaches open this weekend

Originally published: August 29, 2011 10:29 PM
Updated: August 29, 2011 10:50 PM
By BILL BLEYER bill.bleyer@newsday.com



Lifeguards watch for any signs of tropical storm-related erosion during cleanup at Jones Beach State Park. As on other Long Island beaches, crews work to prepare it for Labor Day weekend. Videojournalists: Ed Betz and Alejandra Villa (Aug. 29, 2011)

Videos



Tropical Storm Irene left Long Island with significant erosion and extensive flooding, but most South Shore beaches are expected to be open before the Labor Day weekend.

Some beaches, primarily in Bayville and elsewhere on the North Shore, gained sand thanks to Irene.

Monday state, county and town employees were pumping out

Find Your Next Car with Dealer Special of the Week



Related Stories



More coverage: Tropical Storm Irene slams LI

Editorial: Irene second-guessers off base

Letters: Storm disaster avoided

Michaud: Life in the dark ages

Mayor: 53,000 without power in NYC

Irene updates on Twitter

Show toolbar

Register Log in

things to do with your kids? Check out our brief guide to free LI library events for kids in September. http://t.co/0Aa2LbS 15 minutes ago

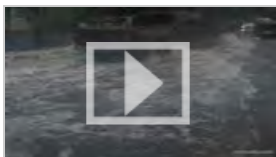
newsday: RT @LI_Now: The Poll: Is the criticism of LIPA's response to Irene outages fair? So far, most say no. http://t.co/YpxfXEY #irene #longisland 16 minutes ago

newsday: RT @NewsdayAlfonso: Organizers of #LIBus "people's hearing" are calling for 5 years of no fare hikes or service cuts from a private

Post-Irene Jones Beach



Damage in Long Beach



Damage in Mastic Beach

floodwater, assessing damage and beginning repairs.

Three [Babylon](#) town beaches opened, although state beach parks remain closed. Three shoreline state parks will reopen Tuesday: Hither Hills, [Montauk Point](#) and fields 2 and 3 at [Robert Moses](#).

The state beach that took the worst erosion hit, as is usual in storms, was [Robert Moses](#). "There was some erosion but some sand came back" after the storm, said Ronald Foley, state parks regional director. "There will be a usable beach but we need to get it cleaned up first," hopefully by the weekend.

At Jones Beach, park manager Susan Guliani said buildings are missing roof shingles, there was damage to light poles and pumping equipment and 2 miles of snow fence that helped hold the sand on the beachfront was destroyed.

The surf flooded picnic areas and recreation areas and the basement of the Central Mall concession building.

Most [Suffolk County](#) parks will reopen Tuesday. The exceptions are Meschutt Beach and the outer beach at Smith Point, where there was erosion, dune washovers in two areas and lost snow fencing installed to support the dunes. "We'll be open for Labor Day weekend," County Executive [Steve Levy](#) said of all county parks.

[Nassau County's](#) Nickerson Beach was flooded and some damaged sections of the boardwalk leading to the beach have been removed. The county expects the park to be ready for Labor Day weekend.

[Babylon](#) officials reopened Overlook, Gilgo and Cedar beaches Monday. The storm stripped away many of the primary dunes at Gilgo and West Gilgo beaches -- roughly 120,000 cubic yards of sand -- leaving very little storm protection going forward, a town spokesman said. In some locations, the surf washed over [Ocean Parkway](#), but there's no immediate threat of the road being undermined, the town said.

[East Hampton Town](#) beaches reopened Monday, but swimming was still prohibited because of tide conditions. Town Supervisor Bill Wilkinson said that at some [Montauk](#) ocean beaches "believe it or not this seems to have deposited a lot more sand."

The reason for sand accumulation at some beaches and less erosion than anticipated at many others was the wind direction and the spacing of the waves.

"It was the highest storm surge I have seen -- 5 foot -- in [Long Island Sound](#), but the winds were out of the south" and blowing away from the Island, said Jay Tanski, a coastal specialist with the [New York State Sea Grant Extension Program](#). "That meant you weren't getting the wave activity to cause the erosion that you would normally get with that high of a tide."

And, he added, "When there are widely spaced waves, even if they are large, they can bring sand onshore."

With Yamiche Alcindor

and Kery Murakami

What's set to open on the shoreline

operator.

Most popular

Stories

Photos



LIPA chief recognizes communication issues

8/31/11

Firefighters hurt in racing drill accident

8/31/11

Disease threatens Venus Williams' career

8/31/11

Food inspectors flood LI restaurants

8/31/11

Pregnancy doesn't stop call to duty during storm

8/31/11

Find Your Next Car with Dealer Special of the Week

Galleries



Irene slams Long Island, and the clean-up



Your storm photos



East Coast hit by Irene

Web links



MAP: See hardest-hit parts of LI



Map: LIPA outages on LI



Latest videos

L.I. Divorce Attorneys

A Divorce is Supposed to Stop the Fighting. . . Not Worsen It!
www.breiterandgura.com

New York Beach

Suffolk County White Sand Beaches. Get Free Long Island Travel Guide!
www.discoverlongisland.com

Free Foreclosure Listings

Search Foreclosures by Zip Code. View Foreclosures for Sale Now!
www.BankForeclosuresListing.com



AdChoices

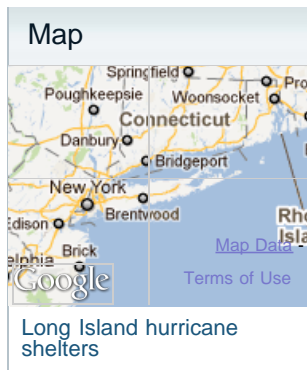
careerbuilder
top jobs

search jobs

- Nanny Housekeeper Jobs
- Aircraft Technician
- Banking - Assistant Bsa Office
- Dietitian
- Drivers
- Certified Nurses Aid

View all top jobs

Post your resume



Shoreline state parks that will remain closed Tuesday because of flooding, loss of power or cleanup:

Captree (will reopen when electric power is restored)

Caumsett

Jones Beach

Nissequogue River

Orient Beach

Sunken Meadow

Wildwood

Shoreline state parks that will open Tuesday:

Camp Hero

Heckscher (Field 8 and Picnic Area)

[Hither Hills](#)

[Montauk Point](#)

[Robert Moses](#) (Fields 2 and 3)

[Suffolk](#) County shoreline parks will reopen Tuesday except for Meschutt Beach and the outer beach at Smith Point.

[Nassau](#) County's Nickerson Beach, which sustained major flooding, is expected to open by Labor Day weekend.

[East Hampton](#) town beaches, but not swimming, reopened Monday.

[Babylon](#) reopened Overlook, Gilgo and Cedar beaches Monday.

[Oyster Bay's Tobay Beach](#) could reopen Tuesday afternoon if power is restored.

User rating:  (1) [Click to rate](#)

You might also be interested in:

[LIPA: Power back for most by Friday](#) From [newsday.com](#) - News

[Long Beach takes storms in stride](#) From [newsday.com](#) - Long Island News

[As season opens, LI beaches ready](#) From [newsday.com](#) - Long Island News

[LIPA ups estimate of severely damaged spots](#) From [newsday.com](#) - News

Selected for you by our sponsor:

[Michele Bachmann Disrespects Hurricane Victims With Another Stupid Comment](#) From [The Stir By CafeMom](#)

[These 4 Things Happen Right Before A Heart Attack](#) From [Newsmax.com](#)