

Third
Long Island Sound
Lobster Health
Symposium

Friday, March 7, 2003
Bridgeport, Connecticut

Co-Sponsored by

**The Long Island Sound
Lobster Research Initiative**
and the
**Connecticut Department
of Environmental Protection**
Long Island Sound Research Fund

CT-SG-03-02

The Long Island Sound Lobster Research Initiative

A collaboration funded by the National Oceanic and Atmospheric Administration (NOAA), National Marine Fisheries Service, NOAA Sea Grant Programs of Connecticut and New York, the Connecticut Department of Environmental Protection Long Island Sound Research Fund, and the U.S. Environmental Protection Agency, Long Island Sound Study Office, in collaboration with the Atlantic States Marine Fisheries Commission. In July 2000, Congress made \$6.9 million available to support research into the causes of the 1999 lobster mortality event and to support assessment and monitoring of the Long Island Sound lobster resource.

Lobster Mortality Research Steering Committee

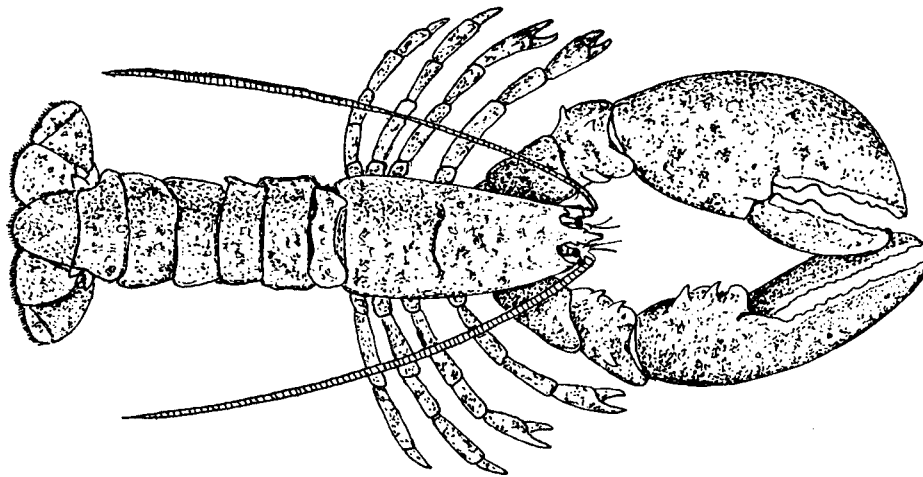
- Atlantic States Marine Fisheries Commission
- Connecticut Department of Environmental Protection
- New York State Department of Environmental Conservation
- NOAA, National Marine Fisheries Service
- NOAA, National, Connecticut, New York Sea Grant Programs
- U.S. Environmental Protection Agency, Long Island Sound Study Office
- Connecticut and New York lobster industry representatives

Connecticut Department of Environmental Protection Long Island Sound Research Fund

The Long Island Sound Research Fund, administered by the Connecticut Department of Environmental Protection, was established in 1989 to promote scientific research through in-state academic institutions directed toward priority environmental protection and management of the Long Island Sound estuary. In July 2000, Governor Rowland made one million dollars available to the fund to help determine the causes of recent lobster mortality and identify methods to prevent future declines.



Third
Long Island Sound
Lobster Health
Symposium



Hosted by the NOAA, Sea Grant Programs in Connecticut and New York under the auspices of the Atlantic States Marine Fisheries Commission (ASMFC) Lobster Mortality Research Steering Committee.

For additional information, contact:

Connecticut Sea Grant Extension, 1080 Shennecossett Road, Groton, CT 06340
Phone: (860) 405-9127; FAX: (860) 405-9109
<nancy.balcom@uconn.edu>

New York Sea Grant Extension, 3059 Sound Avenue, Riverhead, NY 11901
Phone: (631) 727-3910; FAX: (631) 369-5944
<aoc5@cornell.edu>

Visit our website at www.seagrantsunysb.edu/LILobsters

Symposium Agenda

9:00 a.m. **Welcoming Remarks**

Anthony Calabrese, Chair, Lobster Mortality Research Steering Committee, NOAA, NMFS
Arthur J. Rocque, Jr., Commissioner, Connecticut Department of Environmental Protection
Gerald Barnhart, Director, NYS DEC, Division of Fish, Wildlife, and Marine Resources
(TBA), NOAA, National Marine Fisheries Service, Department of Commerce

9:15 a.m. **The Status of the Long Island Sound Lobster Resource**

Carl LoBue, New York State Department of Environmental Conservation
Penny Howell, Connecticut Department of Environmental Protection

This presentation combines the work of the following agencies and investigators:

- **Connecticut Department of Environmental Protection**
- **Jospeh Crivello**, University of Connecticut
- **New York State Department of Environmental Conservation**
- **Roman Zajac**, University of New Haven

10:00 a.m. **Discussion Period**

10:20 a.m. **Break**

10:40 a.m. **Environmental Stressors**

Carmela Cuomo, Yale University

This presentation combines the work of the following investigators:

- **Carmela Cuomo**, Yale University; **Raymond Valente**, SAIC
- **Andrew F.J. Draxler and Ashok Deshpande**, NOAA, NMFS, Howard Lab
- **Glenn Lopez and Robert Cerrato**, SUNY Stony Brook
- **Johan C. Varekamp, Ellen Thomas**, Wesleyan University; **Marilyn Buchholtz ten Brink**, USGS; **Mark Altabet**, UMASS, Dartmouth; **Sherri Cooper**, Bryn Althyn College
- **Robert E. Wilson, R. Lawrence Swanson, and Duane Waliser**, SUNY Stony Brook

11:20 a.m. **Discussion Period**

11:40 a.m. **Physiological Responses to Stress**

Richard A. Robohm, NOAA, National Marine Fisheries Service, Milford Laboratory

This presentation combines the work of the following investigators:

- **Robert S. Anderson**, University of Maryland
- **Ernest S. Chang**, University of California, Davis
- **Sylvain De Guise, Jennifer Maratea, Inga Sidor, James Atherton, Brenda Morsey**, University of Connecticut

- **Jan R. Factor**, SUNY Purchase
- **Hans Laufer, William Biggers, M. Johnson, N. Demir**, University of Connecticut;
J. Bagshaw, Worcester Polytechnic Institute
- **Richard A. Robohm**, NOAA, NMFS, Milford Lab; and **Andrew F.J. Draxler**, NOAA,
NMFS, Howard Lab

12:20 p.m. **Discussion Period**

12:40 p.m. **Lunch**

1:40 p.m. **Pesticides**

Sylvain De Guise, University of Connecticut

This presentation combines the work of the following investigators:

- **Sylvain De Guise, Jennifer Maratea, Christopher Perkins**, University of Connecticut
- **Michael N. Horst, Anna N. Walker**, Mercer University; **Thomas Wilson**, Colorado State University; **Parshall Bush**, University of Georgia; **Ernest Chang**, University of California, Davis; **Tim Miller**, University of Maine; **Robert Vogel**, Mercer University
- **Hans Laufer, William Biggers, M. Johnson, N. Demir**, University of Connecticut;
J. Bagshaw, Worcester Polytechnic Institute
- **Anne McElroy, Bruce Brownawell**, SUNY Stony Brook

2:20 p.m. **Discussion Period**

2:40 p.m. **Parasites and Disease**

Salvatore Frasca, Jr., University of Connecticut

This presentation combines the work of the following investigators:

- **Andrei Chistoserdov**, University of Louisiana; **Roxanna Smolowitz, Andrea Hsu**, Marine Biological Laboratory
- **Alistair Dove, Paul Bowser**, Cornell College of Veterinary Medicine; **Carl LoBue**, NYS DEC
- **Salvatore Frasca, Jr., Kathleen Nevis, Thomas E. Mullen**, University of Connecticut
- **Rebecca Gast**, Woods Hole Oceanographic Institution
- **Patrick M. Gillevet**, George Mason University; **Charles O’Kelly**, Bigelow Laboratory for Ocean Sciences

3:20 p.m. **Discussion Period**

3:40 p.m. **Open Discussion**

4:00 p.m. **Summarizing Remarks**

4:30 p.m. **Adjourn**

Table of Contents

The Status of the Long Island Sound Lobster Resource

Fishery Dependent Monitoring of the Long Island Sound Lobster Resource..... 2
Carl LoBue and Penny Howell

Fishery-Independent Monitoring of the Long Island Sound Lobster Resource 4
Penny Howell

Environmental Stressors

Monitoring of Bottom Water and Sediment Conditions at Critical Stations in
Western Long Island Sound 6
Carmela Cuomo, Raymond Valente, and Deren Dogru

Prevailing Water Column Conditions in Long Island Sound and
the Relationship to Lobster Mortality Events 9
Robert E. Wilson, R. Lawrence Swanson, and Duane Waliser

Exposure of Lobsters to the Varied Chemical and Biological Environment of LIS 11
Andrew F.J. Draxler and Ashok Deshpande

Environmental Change in Long Island Sound in the Recent Past:
Eutrophication and Climate Change 12
*Johan C. Varekamp, Ellen Thomas, Marilyn Buchholtz ten Brink,
Mark A. Altabet and Sherri Cooper*

Physiological Responses to Stress

Immunological Health of Lobsters..... 16
Robert S. Anderson

Environmental and Physiological Stresses in Lobsters: Effects on Crustacean
Hyperglycemic Hormone and Heat-Shock Proteins..... 19
Ernest S. Chang

Effects of Environmental Stressors on Disease Susceptibility in Lobsters:
A Controlled Laboratory Study 24
Richard A. Robohm and Andrew F.J. Draxler

Development of Assays for the Evaluation of Immune Function of the
American Lobster as a Tool for Health Assessment 27
*Sylvain De Guise, Jennifer Maratea, Inga Sidor, James Atherton,
Brenda Morsey*

Development of an Assay for Phagocytic Activity in the Immune System of Lobsters	29
<i>Jan Robert Factor</i>	
Hormonal Responses of Lobsters to Stresses, an Interim Report	32
<i>H. Laufer, W. Biggers, M. Johnson, N. Demir, and J. Bagshaw</i>	
Pesticides	
Effects of Pesticides on Lobster Health: Trace Level Measurements and Toxicological Assessment at Environmentally Realistic Concentrations	40
<i>Anne McElroy, Bruce Brownawell, Ann Zulkosky and Joseph Ruggieri</i>	
Acute Effects of Methoprene on Survival, Cuticular Morphogenesis and Shell Biosynthesis in the American Lobster, <i>Homarus americanus</i>	42
<i>Michael N. Horst, Anna N. Walker, Thomas Wilson, Parshall Bush, Ernest Chang, Tim Miller and Robert Vogel</i>	
Malathion immunotoxicity in the American lobsters (<i>Homarus americanus</i>) upon experimental exposure	44
<i>Sylvain De Guise, Jennifer Maratea, Christopher Perkins</i>	
Parasites and Disease	
Progress in Paramoeba Research	50
<i>Patrick M. Gillevet and Charles J. O'Kelly</i>	
Development of Polymerase Chain Reaction- and in situ Hybridization-based Tests for the Specific Detection of the Paramoeba Associated with Epizootic Lobster Mortality by Determination of the Molecular Systematics of the Genus <i>Paramoeba</i>	53
<i>Salvatore Frasca Jr., Kathleen R. Nevis, and Thomas E. Mullen</i>	
Oligonucleotide-based Detection of Pathogenic <i>Neoparamoeba</i> Species	57
<i>Rebecca J. Gast</i>	
Bacterial Assemblages involved in the Development and Progression of Shell Disease in the American Lobster	61
<i>Andrei Chistoserdov, Roxanna Smolowitz, and Andrea Hsu</i>	
Calcinosis in LIS Lobsters During Summer 2002	65
<i>Alistair D.M. Dove, Carl P. LoBue and Paul R. Bowser</i>	
Lobster Mortality Research Steering Committee	67
Researchers	68